

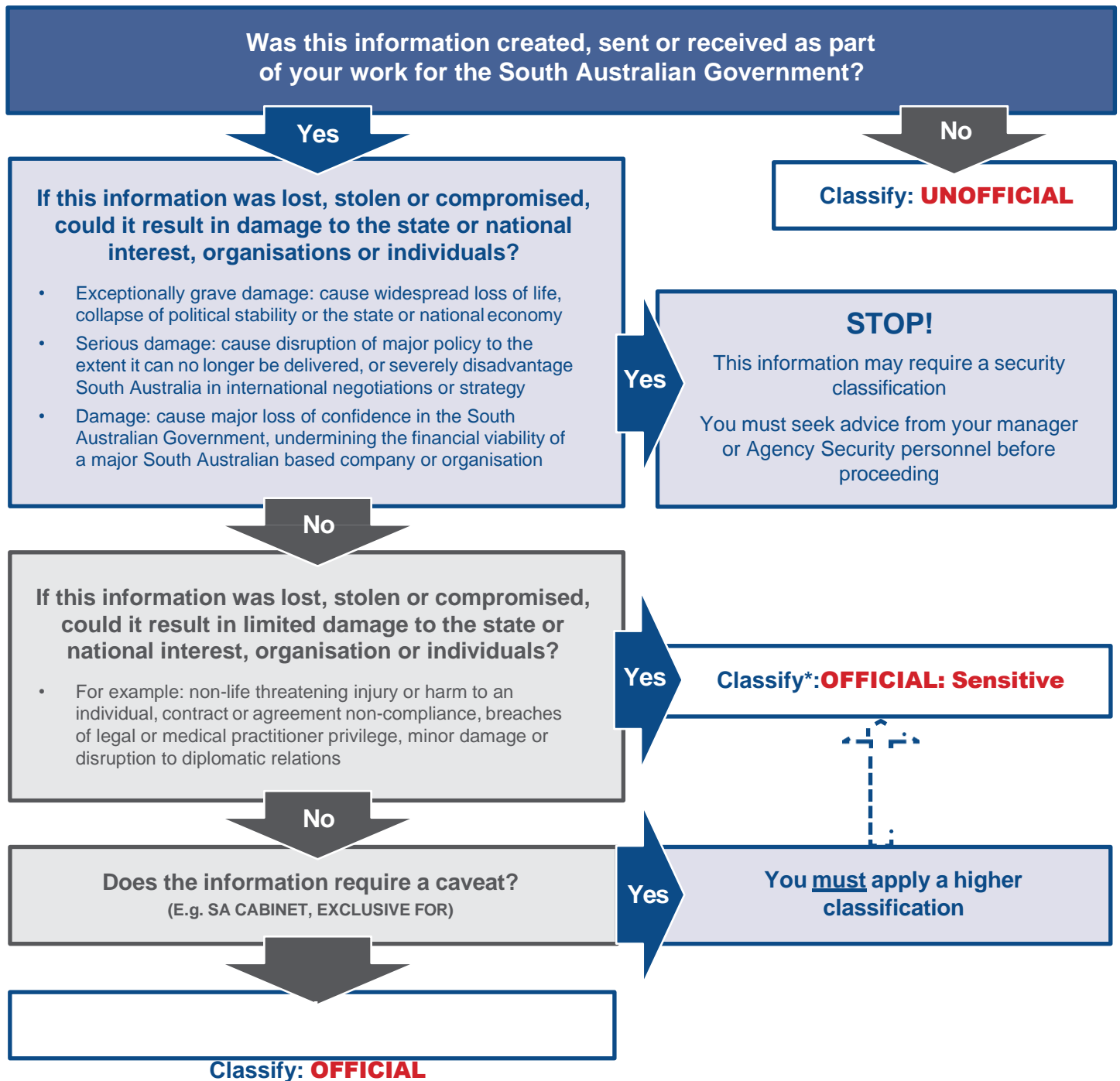
# South Australian Protective Security Framework

## How to classify your information



Government  
of South Australia

Use this chart in conjunction with the [South Australian Protective Security Framework Business Impact Level Tool](#)



### \*Information Management Markers

Optional markings used with a classification of OFFICIAL: Sensitive or above where disclosure may be limited by appropriate legal or professional restrictions:

<b>Legal privilege</b>	Restrictions on access to, disclosure or use of, information covered by legal professional privilege
<b>Legislative secrecy</b>	Restrictions on access to, disclosure or use of, information covered by legislative secrecy provisions
<b>Personal privacy</b>	Restrictions under the <a href="#">Information Privacy Principles (IPPS) Instructions</a> on access to, disclosure or use of, personal information collected or received
<b>Medical in confidence</b>	Restrictions on access to, disclosure or use of, information covered by practitioner/patient confidentiality or legislative requirements